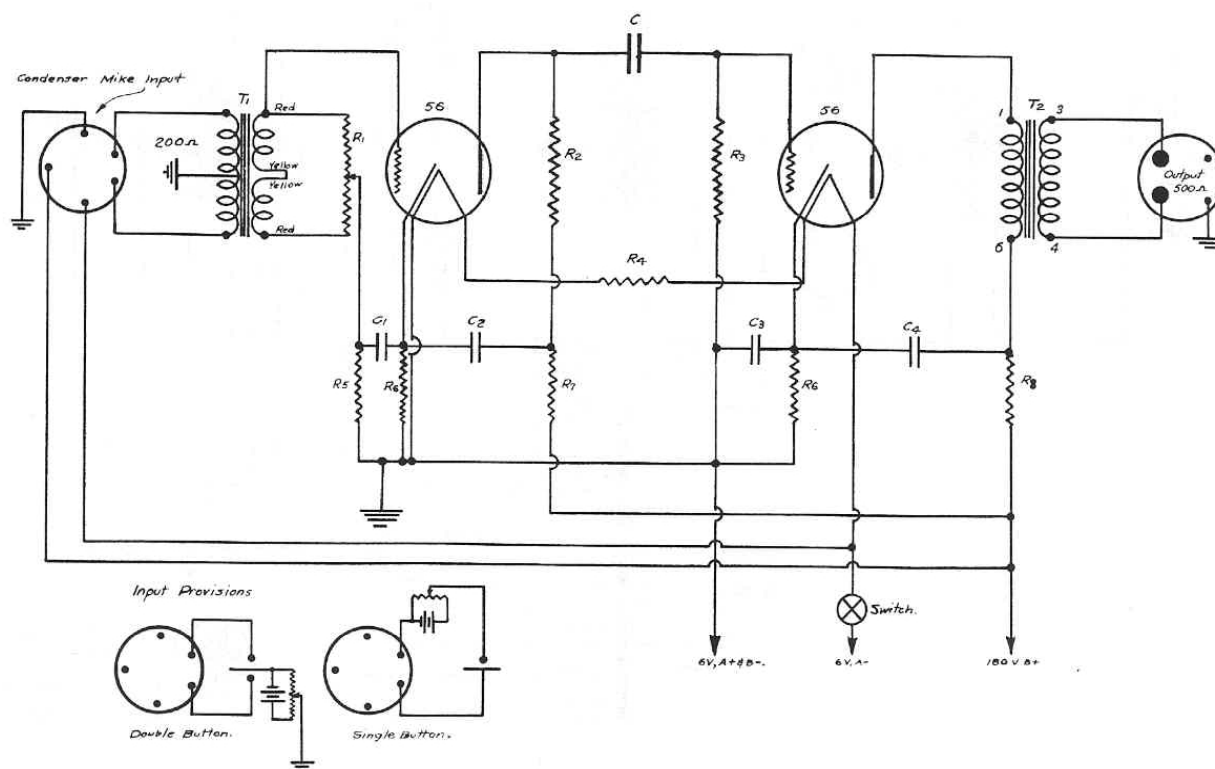


# Collins Transmitters

Sheet 90C

## TYPE 90C INPUT AMPLIFIER



### LIST OF PARTS FOR 90C INPUT AMPLIFIER

| Quantity Required | Symbol                                       | Size              | Rating | Description                  | Type No. | Price Each |
|-------------------|--|-------------------|--------|------------------------------|----------|------------|
| 1                 | R <sub>1</sub>                               | 250,000 ohm       |        | Potentiometer                | 40       | \$ .65     |
| 1                 | R <sub>2</sub>                               | 25,000 ohm        |        | Wire Wound Resistor          | RD       | .20        |
| 1                 | R <sub>3</sub>                               | 500,000 ohm       |        | Metallized Resistor          | MF4      | .10        |
| 1                 | R <sub>4</sub>                               | 1 ohm             |        | Filament Resistor            | RD       | .20        |
| 1                 | R <sub>5</sub>                               | 100,000 ohm       |        | Metallized Resistor          | MF4      | .10        |
| 2                 | R <sub>6</sub>                               | 25,000 ohm        |        | Wire Wound Resistors         | RD       | .20        |
| 1                 | R <sub>7</sub>                               | 10,000 ohm        |        | Wire Wound Resistor          | RD       | .20        |
| 1                 | R <sub>8</sub>                               | 5,000 ohm         |        | Wire Wound Resistor          | RD       | .20        |
| 1                 | C  | .25 mfd.          | 400 V. | Coupling Condenser           | 481      | .20        |
| 1                 | C <sub>1</sub> C <sub>3</sub> C <sub>4</sub> | 2 mfd.            | 200 V. | Filter Condenser             | GB-200   | .60        |
| 1                 | C <sub>2</sub>                               | .5 mfd.           | 200 V. | Filter Condenser             | GB-50    | .27        |
| 1                 | T <sub>1</sub>                               | 200 ohm to grid   |        | Microphone Input Transformer | 605      | 4.00       |
| 1                 | T <sub>2</sub>                               | Plate to 500 ohms |        | Output Transformer           | 517A     | 4.00       |
| 3                 | UY G. E. Textolite Sockets                   |                   |        |                              |          | .06        |
| 1                 | UX G. E. Textolite Sockets                   |                   |        |                              |          | .06        |
| 1                 | Aluminum Chassis, completely punched         |                   |        |                              |          | 1.50       |
| 1                 | Filament Switch                              |                   |        |                              |          | .35        |

Complete set of hardware, including cabinet, panel, handle, name plate and sundry fittings 6.50